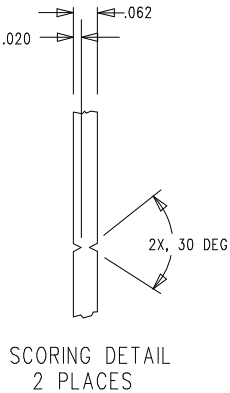
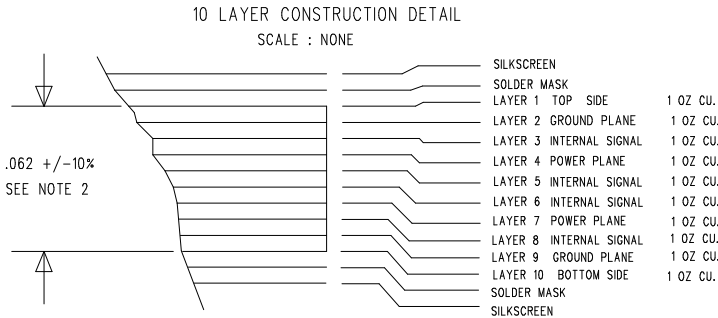
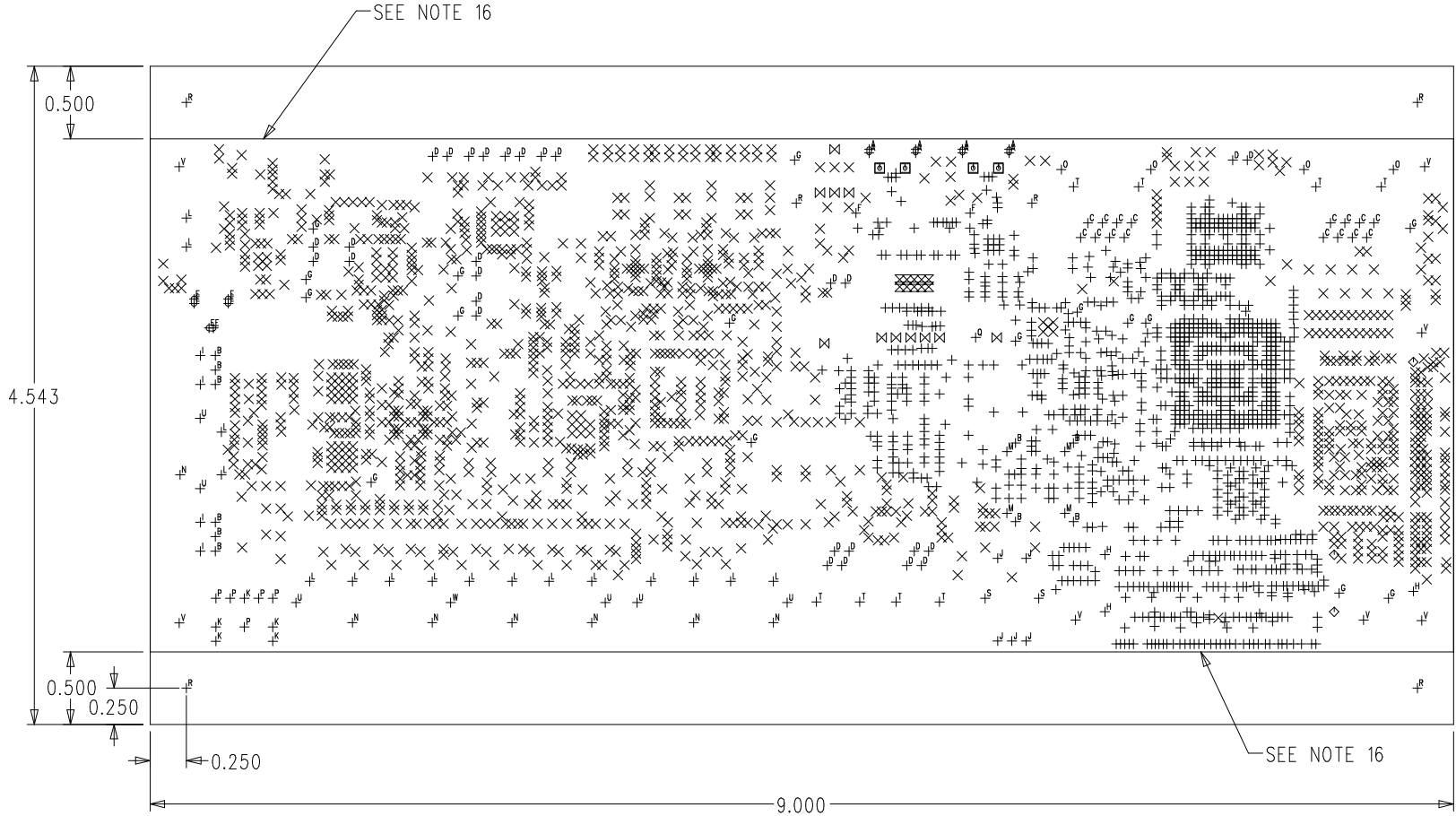



REVISIONS				
REV	DESCRIPTION OF CHANGE	DRFTR	DATE	APPROVED
0.1	NEW RELEASE	C.C.D.	08/20/14	
0.2	UPDATED PER ECO2014-086	C.C.D.	12/19/14	
1.0	UPDATED PER ECO2015-018	C.C.D.	05/12/15	
1.1	UPDATED PER ECO2016-014	C.C.D.	05/10/16	

- UNLESS OTHERWISE SPECIFIED
- BOARD TO BE FABRICATED PER IPC-6012B, CLASS 2.
  - MATERIAL: FR-370HR OR EQUIVALENT. OUTER LAYERS 1 OZ/SQFT CU INNER LAYERS 1 OZ/SQFT CU FINISHED .062 +/-10%. VENDOR MAY ADJUST THICKNESS TO FULFILL NOTE 9.
  - PLATING: ADDITIONAL CU PLATING 1 OZ/SQFT  
ALL HOLES PLATED THROUGH, EXCEPT AS NOTED IN HOLE LEGEND.  
MINIMUM PTH BARREL THICKNESS = 0.0008" MINIMUM AVERAGE PER IPC-6012B WITH AMENDMENT 1, CLASS 2 REQUIREMENTS. WITH NO SINGLE MEASUREMENT LESS THAN 0.00071 IN THE PLATED HOLES.
  - FINISH: SURFACES TO BE COATED BY ENIG OF 3 TO 5 MICRONS OVER A MINIMUM OF 150-200 MICRONS OF LOW STRESS NICKEL.
  - SOLDERMASK: SOLDER MASK TO BE TRANSPARENT GREEN LPI BOTH SIDES PER GERBER FILES. VENDOR MAY ADJUST SOLDERMASK PAD SIZE AS NEEDED.
  - SILKSCREEN: WHITE EPOXY INK, APPLY TO BOTH SIDES PER GERBER FILES.
  - ARTWORK: MINIMUM FEATURE SIZE = 0.005  
MINIMUM AIR GAP = 0.004
  - ALL DIMENSIONS ARE IN INCHES.
  - CONTROLLED IMPEDANCE (+/-10%):  
ALL .005" TRACES TO BE 50 OHM SINGLE ENDED.  
ALL .0056" TRACES TO BE 50 OHM SINGLE ENDED.  
ALL .0045" TRACES TO BE 100 OHM DIFFERENTIAL PAIRS.
  - NON-FUNCTIONAL COPPER THIEVING IS ALLOWED ON OPEN AREAS.
  - VIAS SHOULD BE COVERED ACCORDING TO ONE OF THE FOLLOWING METHODS.  
METHOD 1 IS PREFERRED.  
METHOD 1: VIAS MUST BE FILLED WITH SOLDERMASK MATERIAL AFTER ELECTROLESS NICKEL/IMMERSION GOLD AND BEFORE PRIMARY LPI MASK. AFTER THE FILL IS CURED, THE PRIMARY MASK IS THEN APPLIED WITH NO VIA APERTURES BOTH SIDES.  
METHOD 2: AFTER APPLICATION OF FULL BODY ELECTROLESS NICKEL/IMMERSION GOLD, APPLY PRIMARY MASK WITH REDUCED VIA APERTURES THAT ARE 6 MILS LARGER THAN DRILLED HOLE DIAMETER BOTH SIDES. THEN APPLY SOLDER MASK PLUG ON COMPONENT SIDE.
  - VIA HOLES (.006 & .012) REQUIRE TANGENCY ONLY, INSTEAD OF ANNULAR RING.
  - TEARDROP PADS ARE ACCEPTABLE WHERE NEEDED.
  - REMOVAL OF NON-FUNCTIONAL PADS ON LAYERS 3, 5, 6, AND 8 IS ACCEPTABLE.
  - USE IPC-D-356A NETLIST AS SUPPLIED FOR CHECKING.
  - V SCORE 1 LINE ON BOTH SIDES OF THE BOARD. SEE DETAIL.
  - BUILD AS 1-UP PCB.

SIZE	QTY	SYM	PLATED	TOL
0.006	1338	+	YES	+/-0.003
0.012	1488	×	YES	+/-0.003
0.026 x 0.033	4	□	YES	+/-0.003
0.028	3	◇	NO	+/-0.003
0.029	10	⊗	YES	+/-0.003
0.032	11	⊗	YES	+/-0.003
0.033 x 0.059	4	⊕	YES	+/-0.003
0.033	10	⊕	YES	+/-0.003
0.035	16	⊕	YES	+/-0.003
0.038	28	⊕	YES	+/-0.003
0.04 x 0.07	3	⊕	YES	+/-0.003
0.04	2	⊕	NO	+/-0.003
0.04	16	⊕	YES	+/-0.003
0.044	3	⊕	NO	+/-0.003
0.045	4	⊕	YES	+/-0.003
0.047	5	⊕	YES	+/-0.003
0.047	5	⊕	NO	+/-0.003
0.051	16	⊕	YES	+/-0.003
0.057	4	⊕	NO	+/-0.003
0.059	7	⊕	YES	+/-0.003
0.063	4	⊕	YES	+/-0.003
0.071	5	⊕	YES	+/-0.003
0.089	1	⊕	NO	+/-0.003
0.125	6	⊕	NO	+/-0.005
0.125	2	⊕	YES	+/-0.005
0.128	8	⊕	NO	+/-0.005
0.14	6	⊕	NO	+/-0.005
0.144	7	⊕	NO	+/-0.005
0.187	1	⊕	NO	+/-0.005



UNLESS OTHERWISE SPECIFIED DIMENSIONS ARE IN INCHES TOLERANCES ARE : .XX +/- .010 .XXX +/- .005	CONTRACT NO.		 2 Elizabeth Drive Chelmsford, MA 01824	
	APPROVALS	DATE		
MATERIAL SEE NOTES	DRAWN CHECKED	C.C.D. 05/10/16	FABRICATION DRAWING ADSP-SC584 EZ-BOARD	
FINISH SEE NOTES	ENGINEERING QUALITY		SIZE B	REV. 1.1
DO NOT SCALE THIS DRAWING	MANUFACTURING		SCALE 1 : 1	SHEET 1 OF 1